

Welcome

PUBLIC MEETING #1

October 2017



Vision

The vision of the Waller County Transportation Plan is to enhance safety and mobility for all users while preserving the county's heritage and protecting environmentally sensitive areas.

Goals	Objectives
<p>Enhance Mobility</p> <p>Develop innovative approaches to manage and improve transportation facilities, minimizing delays and selectively increasing roadway capacity on the transportation network.</p>	<ul style="list-style-type: none"> • Improve safety • Improve connectivity • Improve access • Preserve ROW • Mitigate barriers • Revise development policies
<p>Economic Development</p> <p>Support continued economic development by managing congestion, improving travel reliability and safety</p>	<ul style="list-style-type: none"> • Mitigate congestion • Improve reliability
<p>Quality of Life</p> <p>Reflect the County's priorities on protecting quality of life and the natural environment through appropriate use of design concepts and mitigation techniques</p>	<ul style="list-style-type: none"> • Preserve county heritage • Balance between transportation network and natural environment • Incorporate all modes of transportation
<p>Project Consensus</p> <p>Strengthen partnerships between local governments by identifying projects with significant consensus in Waller County.</p>	<ul style="list-style-type: none"> • Community support • Fiscal Soundness • Strengthen partnerships

Transportation Plan

Purpose:

- Identifies existing and future county transportation needs.
- Recommends updates to Thoroughfare Plan and guides future development.
- Develop consensus on short-, medium-, and long-range transportation recommendations.

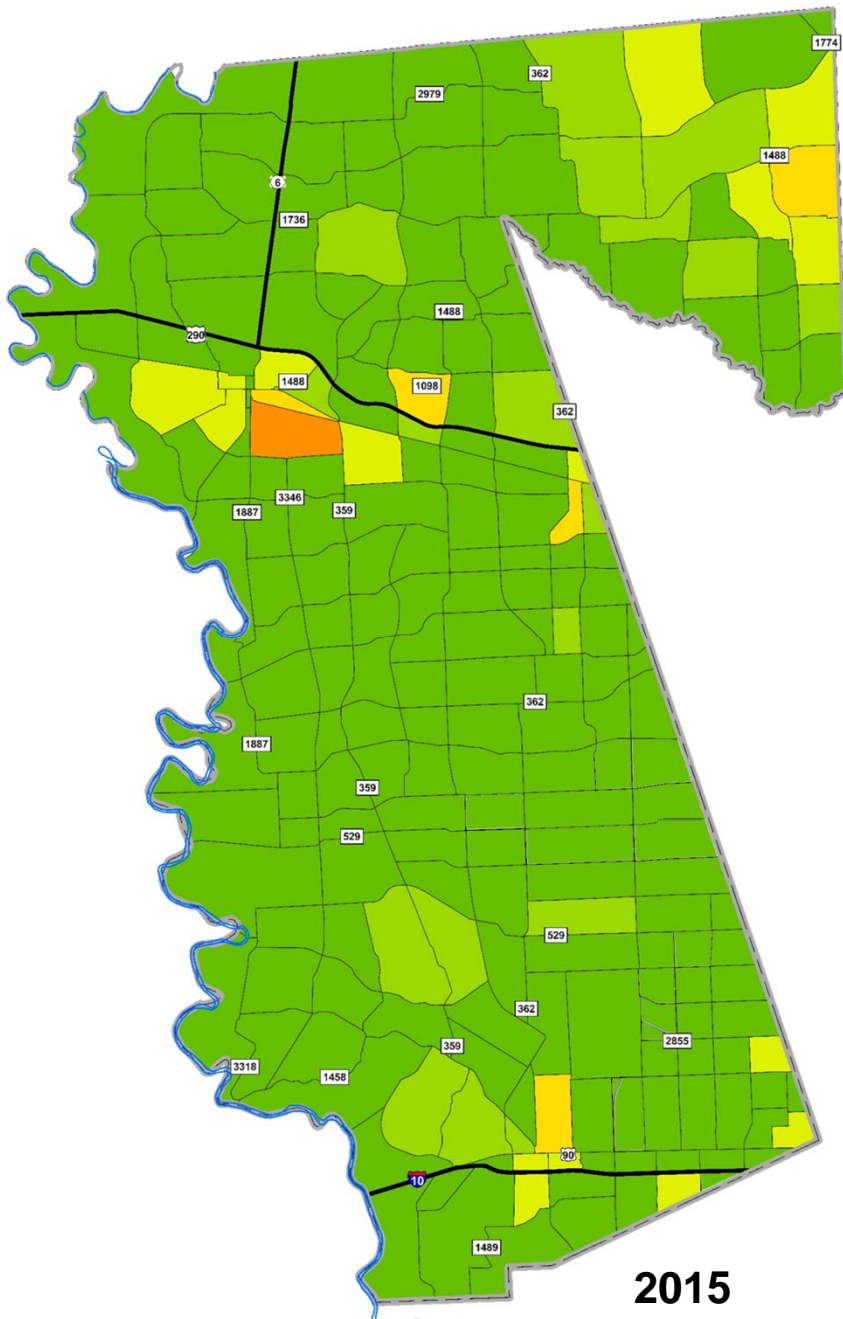
What is it?

- “Roadmap” for needed transportation improvements.
- Considers needs of all users (not just a roadway plan).
- Collaborative effort between government entities in the County

Why do we need one?

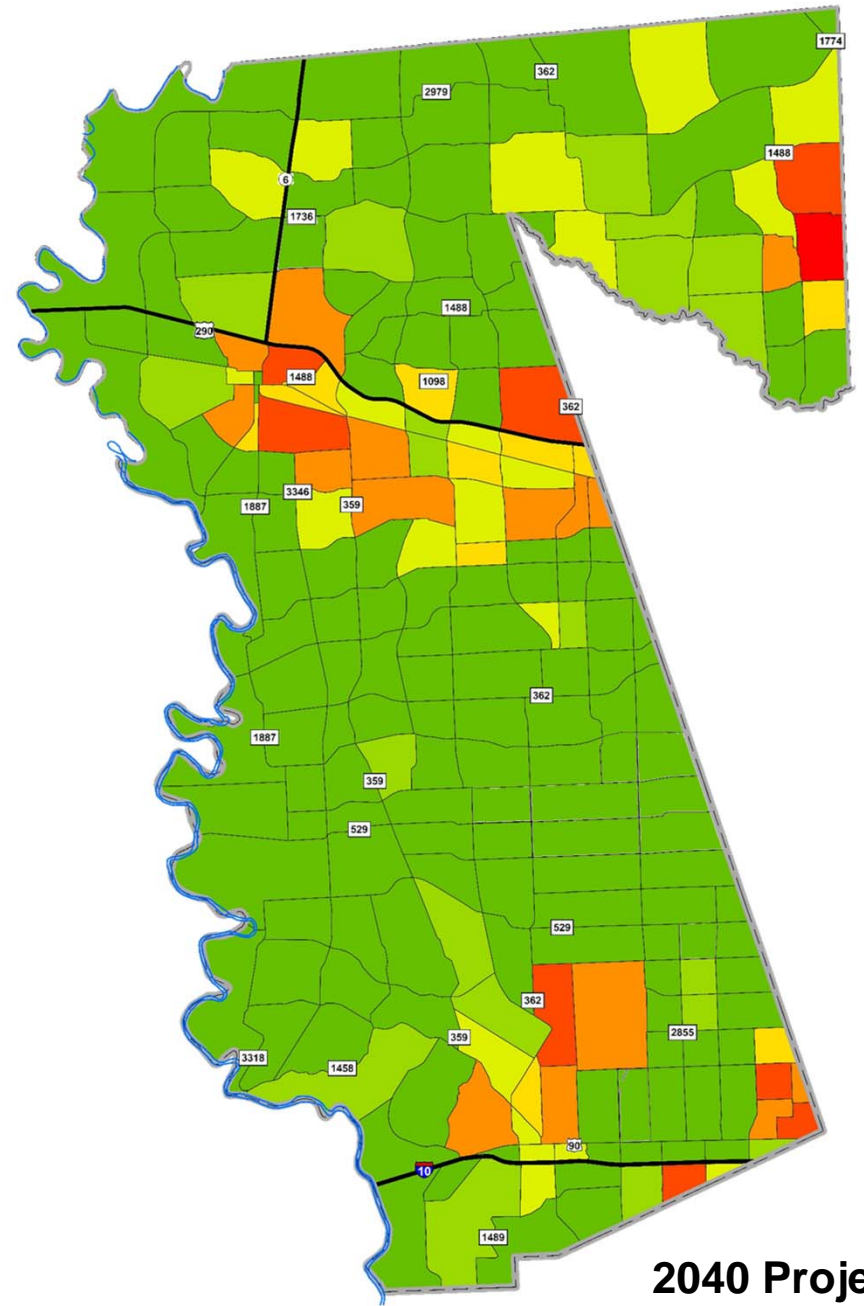
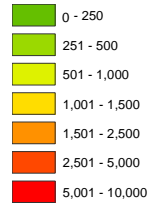
- Population and employment in Waller is growing and is expected to continue to grow.
- New developments (i.e. Amazon) will attract more residents and commuters to area.
- Don't want to leave it to chance.

Population Growth



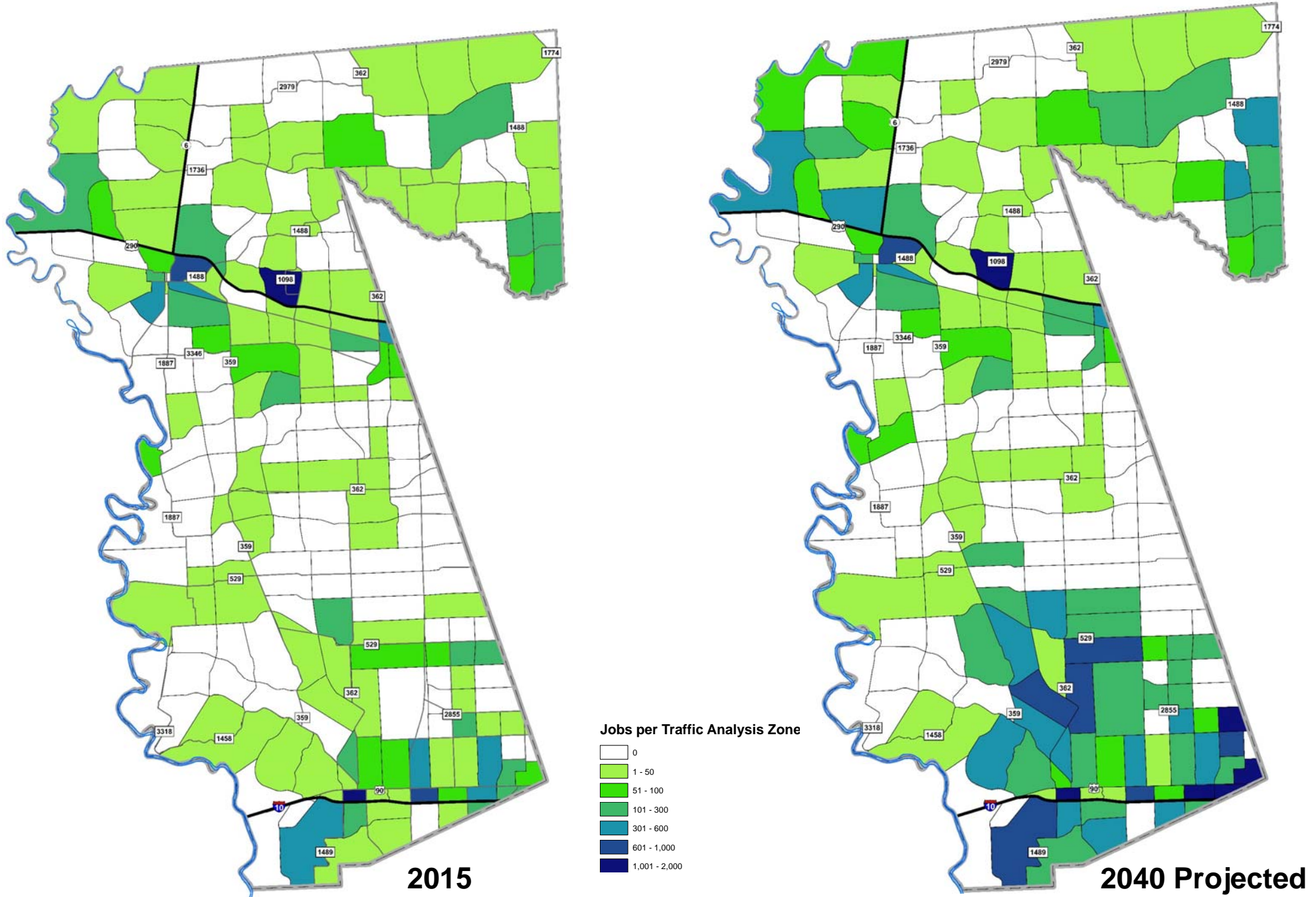
2015

People per TAZ



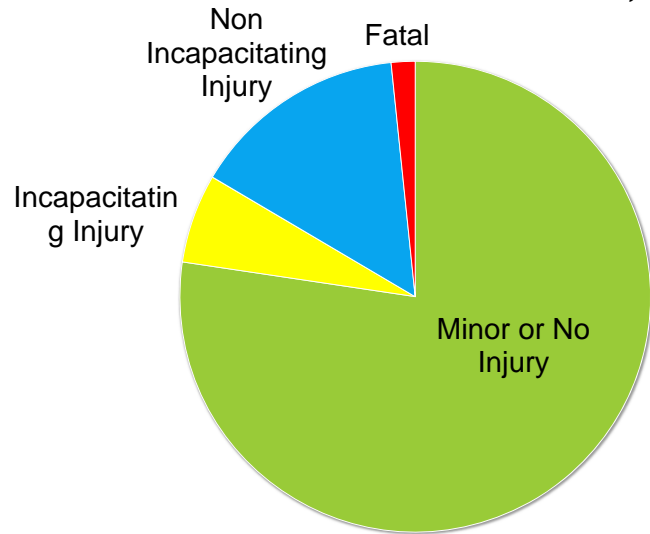
2040 Projected

Employment Growth

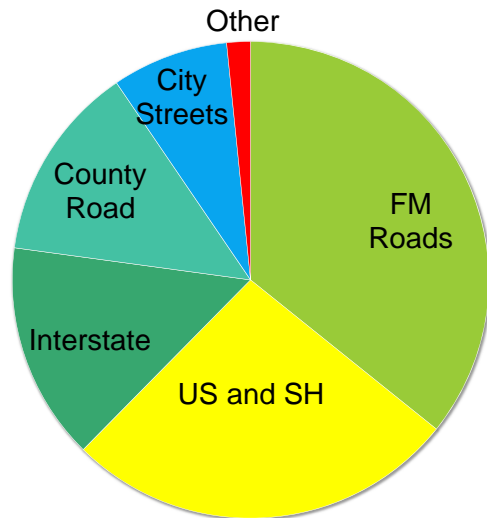


Crash Data: 2012-2016

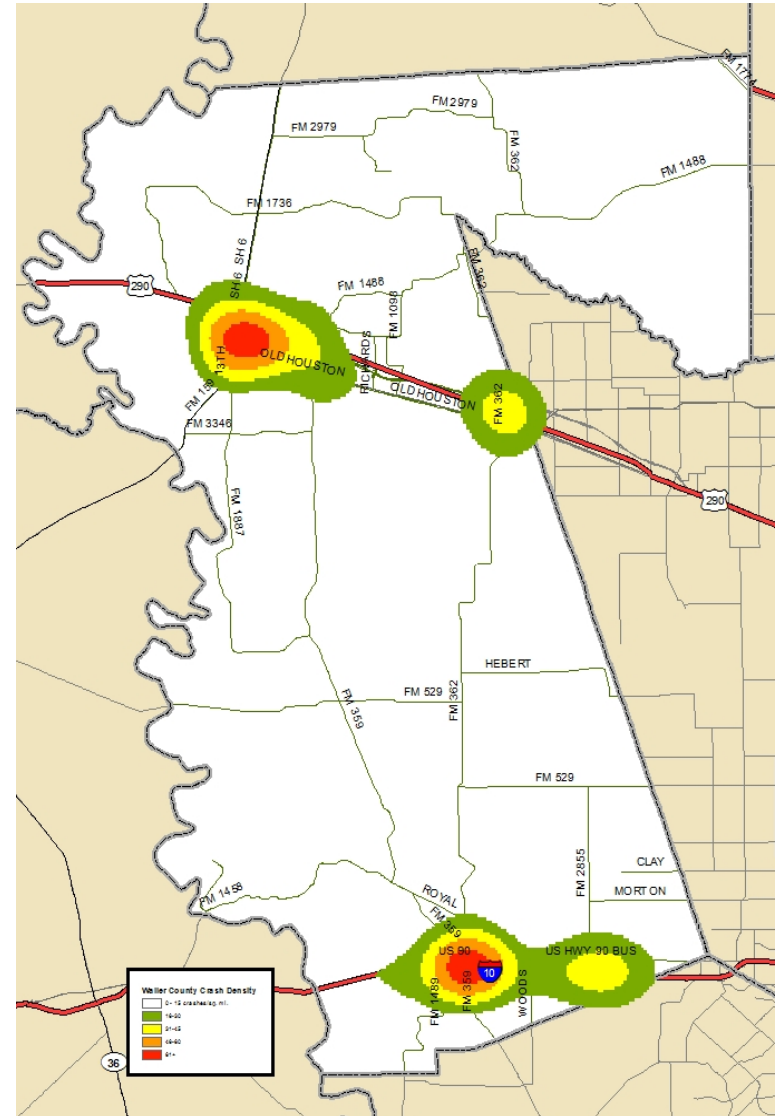
3,366 Total Crashes



Severity of Injuries



Crash Location



Crash Hot Spots